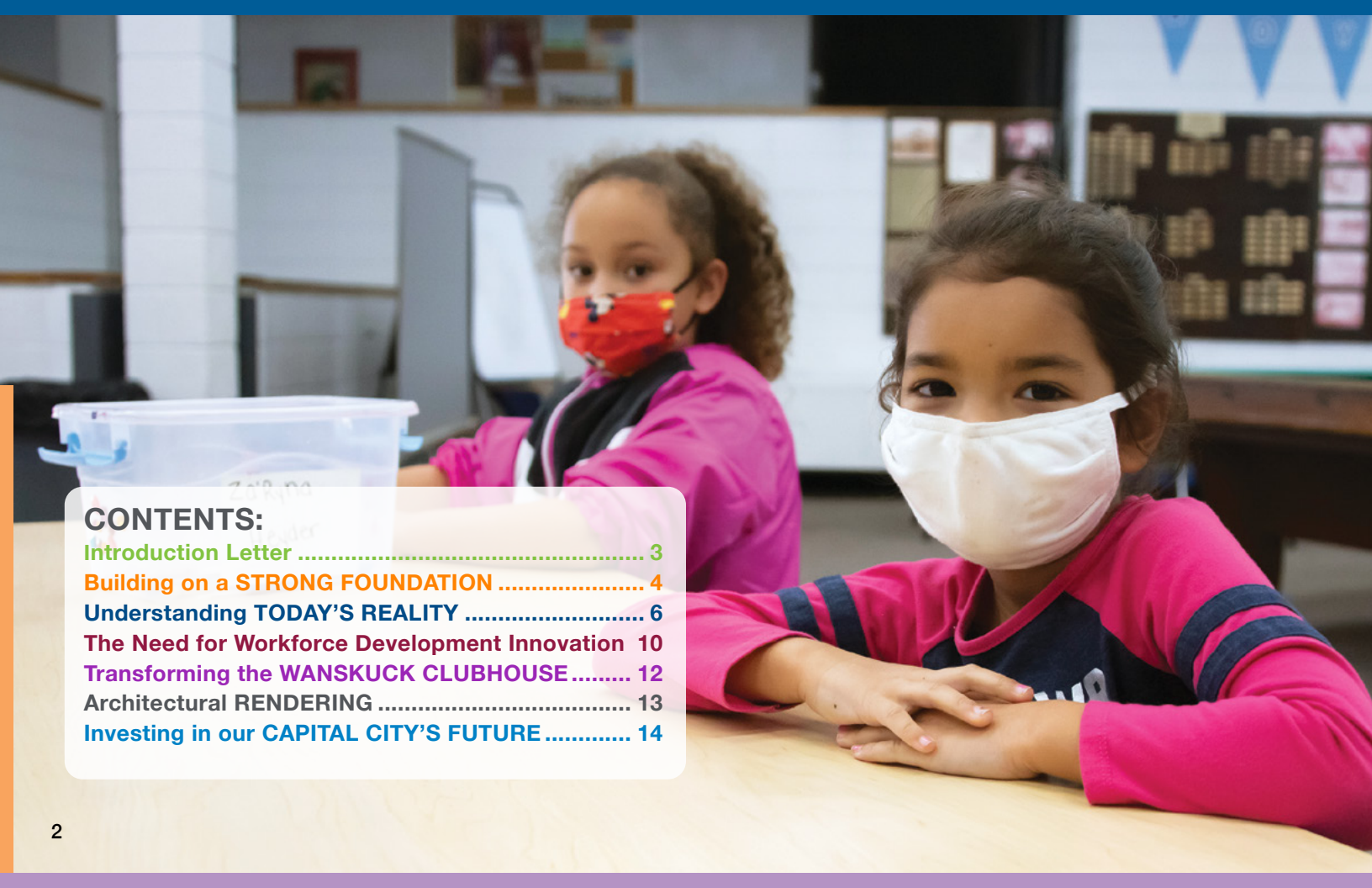


Investing in a

FOREVER CHANGE



BOYS & GIRLS CLUBS
OF PROVIDENCE



CONTENTS:

Introduction Letter 3

Building on a STRONG FOUNDATION 4

Understanding TODAY'S REALITY 6

The Need for Workforce Development Innovation 10

Transforming the WANSKUCK CLUBHOUSE 12

Architectural RENDERING 13

Investing in our CAPITAL CITY'S FUTURE 14

Creating a FOREVER CHANGE



Dear Friends,

With a warm meal, a safe place to learn and the guidance of a caring adult, children and teens have the freedom to dream about their future. They can observe and explore the world around them. They can focus on their homework, learn new skills and healthy habits, and be excited for college and a fulfilling career.

We've been honored to meet Violet, 6, from Fox Point, who dreams of becoming an actress; Parker, 9, from Wanskuck, who wants to be a chef; and Janabel, 17, from South Side, who is working towards becoming an engineer. At the Boys & Girls Clubs of Providence (BGCP), whether aspiring to a career in music or medicine, each young person's path is built on a secure foundation of support and opportunity.

That foundation begins what we call a "forever change" -- a change that permanently breaks through the cycle of poverty, and propels young children and teens towards a bright future.

There's no denying that the pandemic has been profoundly challenging for many youth and families in our capital city and beyond. But throughout this crisis, the BGCP has been there to help. We've provided food and other basic needs, access to a clean and safe environment, school materials, virtual and in-person homework help, workforce development, summer programs, social and emotional support and so much more.

Now, as we confront today's reality, investing in the foundation for our children's future could not be more critical.

BGCP is launching a \$10.5 million capital campaign to dramatically increase Club facilities and programs, including a major transformation of our Wanskuck building in Providence. This will not only improve the safety and accessibility of the space but will significantly increase the number of vulnerable elementary and middle school children we can serve and increase college and career opportunities for hundreds of teens each year.

Children thrive when the entire community is invested in their future. Please join us. Your support will have an **immediate, direct and FOREVER impact** on the lives of at-risk young people in Providence.

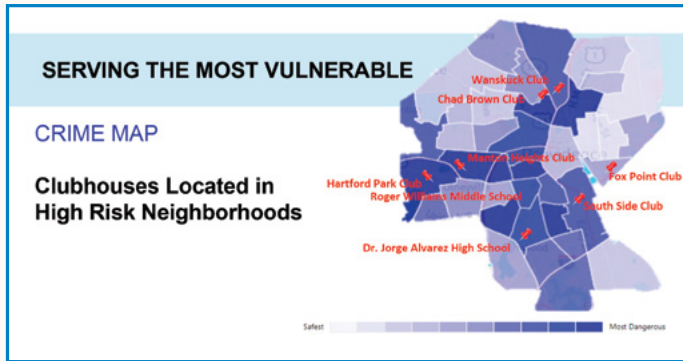
Lisa G. Bisaccia
Campaign Co-Chair

Robert P. Naparstek, MD
Campaign Co-Chair

Nicole R. Dufresne
CEO, Boys & Girls Clubs of Providence

Building on a STRONG FOUNDATION

Operating for more than 150 years, BGCP is the oldest continuously operating Boys & Girls Club in the United States. BGCP's eight sites are strategically located throughout the capital city in areas where kids need them most, including buildings in the Wanskuck, Fox Point, and South Side neighborhoods of Providence, as well as three public housing sites and two schools.



Our mission: BGCP enables and inspires children and youth, especially those from diverse or difficult circumstances, to reach their full potential as productive, responsible, and healthy members of their community, the State of Rhode Island, and the Nation.

Who we serve: BGCP serves more than 4,000 diverse young people organization wide.¹ More than eight out of 10 children who attend

the BGCP live in poverty. Two-thirds are from single-parent homes and 20 percent are in foster homes. One third are multilingual/English learners and are from first generation families living in the United States.

What we do: BGCP provides a safe and secure environment for help with homework, childcare, mentoring, athletic activities and educational and career development programs. BGCP serves 100,000 meals and snacks each year.

BGCP's **formula for impact** is built on three pillars — **academic achievement, a healthy lifestyle and good character**. A national study found that every dollar invested in Boys & Girls Clubs returns \$9.60 in earnings and cost savings. Outcomes include:

Improved grades - regularly attending Club members ages 12-17 outperform their peers nationally on school tests.

Increased interest in STEM careers - 12th-grade Club members are twice as likely to be interested in a STEM career as 12th graders nationally.

Reduced unhealthy/risky behavior - 90 percent of Club ninth graders report abstaining from alcohol compared with 77 percent nationally.

Increased physical activity - 31 percent of Club girls ages 12-15 are physically active every day, compared with 23 percent nationally.

Improved social-emotional learning - Boys and Girls Club approaches significantly reduce peer violence across grade levels, school environments and demographic groups.

4 ¹Based on pre-pandemic data.



Understanding TODAY'S REALITY



Young people are our capital city's greatest resource. Throughout the challenges of the past two years, youth from every corner of Providence have inspired us with incredible stories of resilience, grit, determination and hope. Yet for many vulnerable families, the pandemic has revealed or further eroded access to food, education, sense of safety, social and emotional well-being, job training and employment opportunities. The need to bolster support for our children could not be more critical.

In every area, BGCP's proven formula for impact can help.

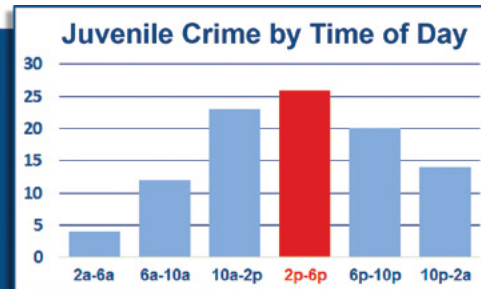
Food and Basic Needs - In 2020, food insecurity in Rhode Island reached the highest level recorded in twenty years with one in four households at risk of hunger. Food insecurity is linked to serious physical, psychological, emotional, and academic problems and can interfere with children's growth and development. This is why BGCP serves more than 100,000 meals and snacks each year, and distributed 135,000 meals to families during the height of the

pandemic. BGCP also provides nutrition education and cooking programs for youth and families. Parents and caregivers report that participation in the Club's food programs ensures that their children are fed even when caregivers need to work non-traditional hours.

Safety and Security - A sense of safety and security is paramount for our youth. We know that the after school hours between 2-6 p.m. are the prime time for juvenile crime in Rhode Island. In recent months, Providence has seen a surge in violence including gang-related crimes. Youth typically begin hanging out with gang members at age 12 or 13 and are at higher risk of joining a gang if they live in communities where they feel unsafe. BGCP offers our youth a safe alternative to violence and gang involvement. In 2021, more than 98% of BGCP members reported that they felt safe at the Club and could talk to staff if they had a problem. 71% felt safer at the Club than other places where they spend time.

Quality Afterschool Programs:

- Reduce Crime
- Boost Academics
- Improve Behavior
- Lead to Healthier Habits
- Save Money





Meeting Kids' Needs

BGCP staff are always on alert to make sure that kids are safe, healthy and have enough to eat. During a recent morning activity, one club staff member asked a group of elementary aged children to share their highs and lows for the day. One 9-year-old girl said, "My high is this snack we are eating. My low is that we don't have food in our house." During the school week this young student and her four siblings ate breakfast, snack and dinner with BGCP, and lunch was provided at school. But when the Club learned that food was tight at home, BGCP immediately sent food, gift cards and hygiene items home to carry the family through a difficult time when they really needed it.

Understanding TODAY'S REALITY

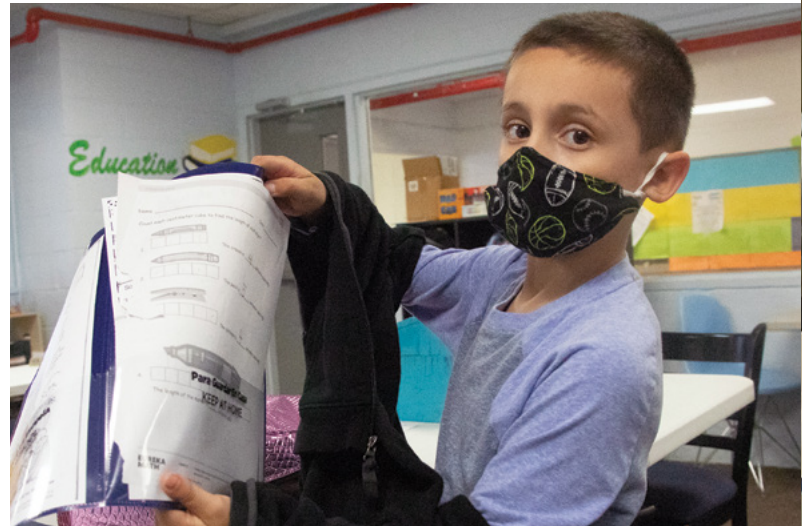


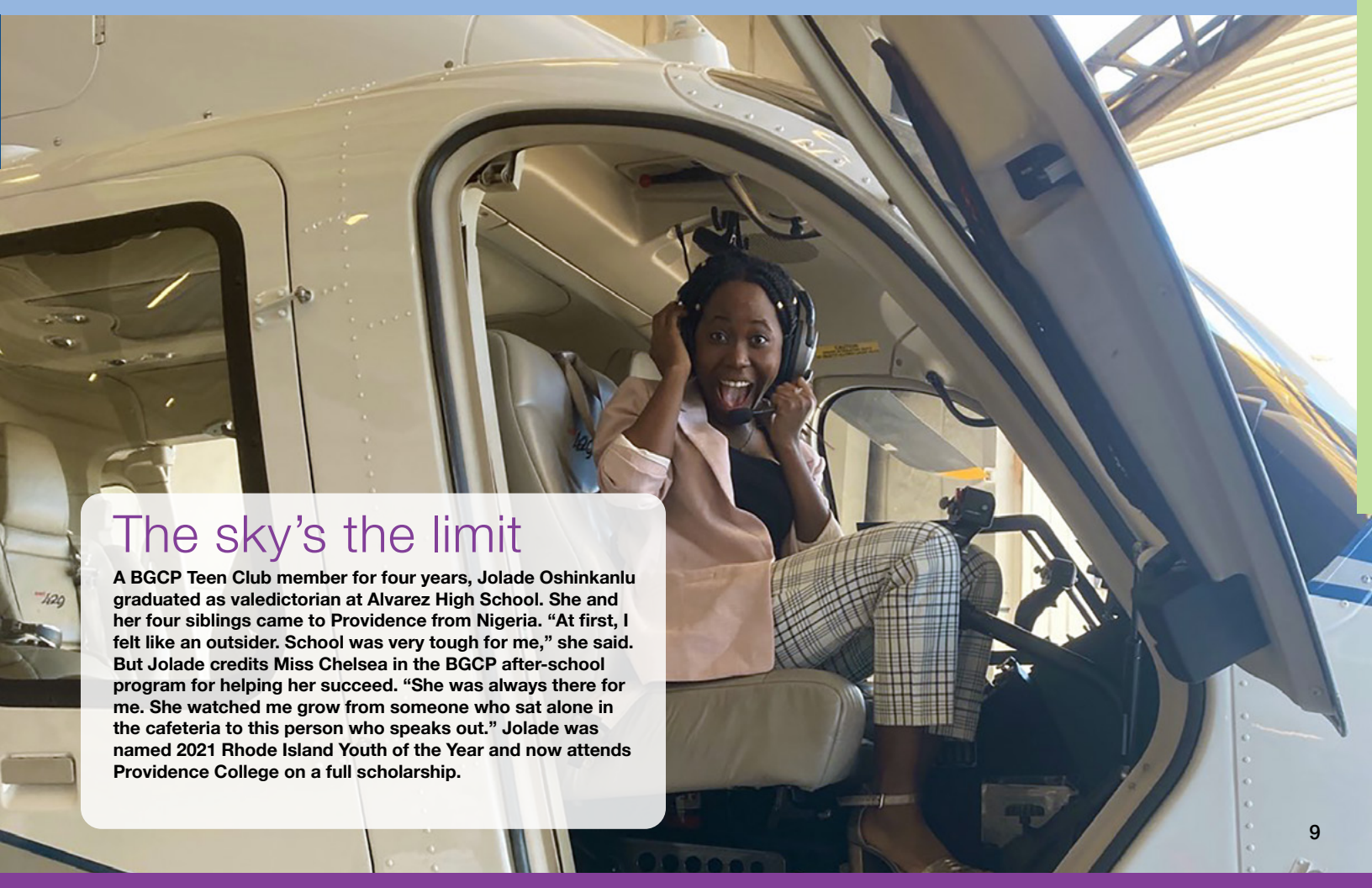
Social and Emotional Wellbeing - In 2021, RI Kids Count reported that one in five children in Rhode Island had experienced anxiety, alcohol/drug dependence or depression. For children living in poverty the rates were even higher. We know that when members feel safe at the Club they are less likely to use prescription drugs, yell at peers when there is a problem, or hit another person. BGCP's formula for impact enables youth to practice and build social-emotional skills through participation in Club programming and interactions with caring adult staff. Essential skills include problem solving, perseverance and key workforce skills. The most recent national youth outcomes member survey found that BGCP has demonstrated positive improvements in social-emotional learning and more than 90% of BGCP members report feeling that adults care about them and listen to them at the Club.

“I was stuck behind a wall of isolation until I found my second home at the Boys & Girls Clubs of Providence. I was able to grow as a person and break through that wall finding freedom.”

- Lyamaris, BGCP Youth of the Year, 2019

Academic Success - The latest scores on the Rhode Island Comprehensive Assessment showed that every district in the state saw declines in student performance during the pandemic, and steeper losses were found in urban districts and among students of color. The good news is that during this time, children who participated in the BGCP/BelExcel Summer Program stayed on grade level and returned to school 2.5 months ahead of their peers in math and 2.0 months in reading. For students in BGCP's Princes to Kings program, after 4 years of programming, 100% of participants graduated from high school and all are attending college.





The sky's the limit

A BGCP Teen Club member for four years, Jolade Oshinkanlu graduated as valedictorian at Alvarez High School. She and her four siblings came to Providence from Nigeria. “At first, I felt like an outsider. School was very tough for me,” she said. But Jolade credits Miss Chelsea in the BGCP after-school program for helping her succeed. “She was always there for me. She watched me grow from someone who sat alone in the cafeteria to this person who speaks out.” Jolade was named 2021 Rhode Island Youth of the Year and now attends Providence College on a full scholarship.

The need for **WORKFORCE DEVELOPMENT INNOVATION**

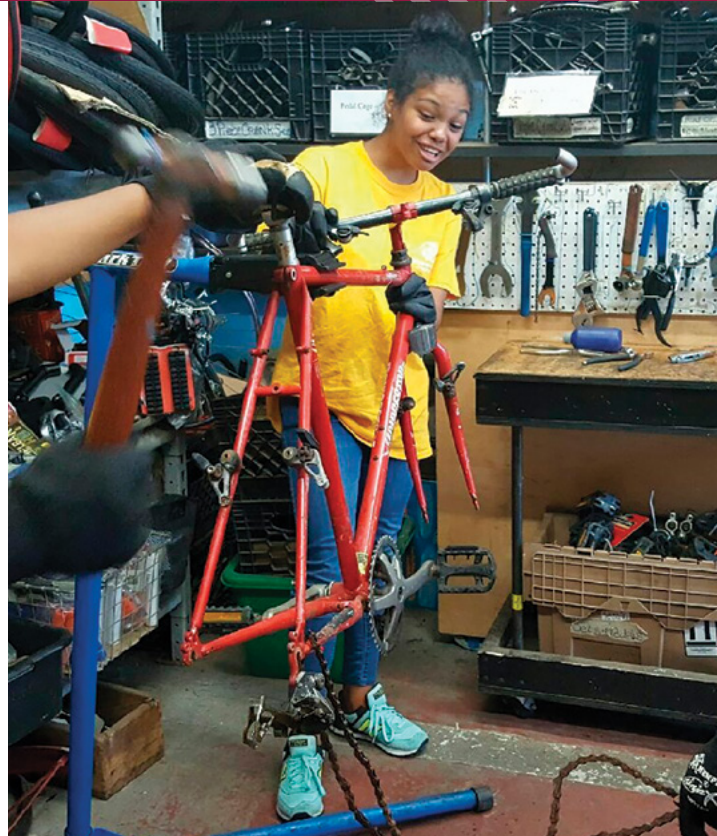


Workforce Development - We know that more than 75% of America's youth express concerns about whether they have the skills necessary to secure a job. In the city of Providence, one in four households live in poverty, 14% do not have a computer, and 10% do not have broadband internet access, making it more difficult to find employment. Ten percent of Providence youth aged 16-24 are "disconnected", meaning they are not in school or employed.

The workforce landscape is undergoing drastic change, with technological innovations and demand for new skills compounding the impact of the global pandemic. To meet the workforce challenges of today and tomorrow, BGCP offers young people safe spaces, positive mentorship, and work experiences. BGCP's teen workforce development program encourages young people to explore, develop and apply knowledge in real world settings. In 2021, BGCP placed 120 student in summer jobs. In 2022, in collaboration with the City of Providence, the job placement program was expanded to year round.

“By being involved in the summer jobs program, I learned, I made my own money, and I was not alone or afraid during the pandemic.”

– *Justyn, rising junior at Juanita Sanchez Educational Complex*





Transforming the WANSKUCK CLUBHOUSE



Investing in our children means investing in facilities that help to keep them safe and to thrive. That's why BGCP is launching the first major capital campaign of our 150 year history. The campaign will focus on one of our flagship buildings, the Wanskuck Clubhouse on Branch Avenue. The converted mill building was generously donated by the Metcalf family in 1928 and has successfully served Providence's North End community ever since.

The Clubhouse currently provides before and after school childcare services to seven neighborhood schools. The Club also offers open-door memberships for neighborhood children ages 6 – 13. Current facilities include a pool, gymnasium and childcare center.

The Wanskuck building is nearly a century old, however, and is drastically underutilized and in need of repair. Only one-third of the space is currently used for Club activities. The childcare program can only accommodate 100 children per week and has a lengthy waiting list. The building does not meet the needs of our middle school and high school students, and cannot offer programming for disconnected youth.

That's why, with your help, the Wanskuck Clubhouse will be the site of a major transformation. Plans include:

A new Workforce Development Innovation Center – A 5,334 sq ft space will be renovated and expanded to include a new technology center and state-of-the-art vocational classrooms. The space will provide college readiness, career development and industry certification programs for 500 youth ages 13-18.

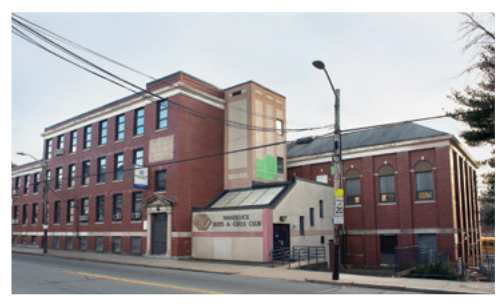
The center will also be available during school hours to offer trade training and GED programs for disconnected youth up to age 24 who are not in school or working.

A State-of-the-Art Teen Center – A new Teen Center will offer a lounge, game room and training area. Teen participation will significantly increase during the critical 2pm-6pm after school hours, with dedicated space and extended hours for 200 middle school and 300 high school aged youth.

A Vibrant Childcare and Education Center - A warm, light-filled and developmentally-appropriate environment will be available for childcare and educational programs. All indoor areas will be accessible to youth, parents and staff with disabilities. Child care enrollment will increase from 100 children to 200 children per week.

Unique recreational spaces and pool - Indoor and outdoor spaces will offer increased access to safe recreational areas for children and teens. An upgraded indoor, heated pool will offer swim lessons and recreation opportunities as well as First Aid, CPR, and Lifeguarding courses. Outdoor areas will offer increased access to fresh air and gardening programs.

A building that is healthy, safe and secure - Building-wide upgrades will improve infrastructure, heat and cooling systems, ventilation, flooring and accessibility. The building will be easier to clean and will reduce the spread of germs and viruses. This will create a healthier and safer environment especially for youth and staff who have asthma and allergies.



n e m d
architects

Investing in OUR CAPITAL CITY'S FUTURE



Your investment in the youth of Providence is an investment in the city's future. It's committing to a thriving, healthy, safe and productive community for everyone.

As we look to a multi-year pandemic recovery, BGCP will have a critical role to play in partnership with parents, schools, policymakers and the broader community to rebuild a foundation for educational and employment success for our city's most vulnerable and disconnected children and youth.

This will create a renewed sense of resilience, belonging, agency, competence and hope that will not only impact our children, but also the city of Providence and the state of Rhode Island as a whole.

With your support, BGCP will

- **Dramatically increase workforce training and other opportunities for 500 middle and high school students each year.**
- **Create new opportunities for disconnected youth ages 18-24.**
- **Offer weekly childcare enrollment for double the number of at-risk families in Providence.**
- **Serve approximately 1,000 at-risk children and teens in Providence each week.**
- **Revitalize the historic Wanskuck building and increase access to safe, healthy and usable space in an underserved community by three-fold.**

Your support for this campaign will make a tremendous difference and will create a FOREVER change in the lives of countless young people -- our community's future -- in Rhode Island's capital city of Providence.

We hope you will join us. To find out more, please contact Nicole Dufresne, CEO, at ndufresne@bgcprov.org.





Courtesy of Kroo Photography



BOYS & GIRLS CLUBS
OF PROVIDENCE

550 WICKENDEN STREET
PROVIDENCE, RI 02903
(401) 444-0750